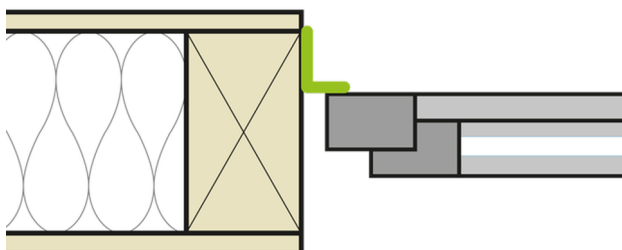


Installation instructions

CONTEGA[®] EXO

Installation steps: 1. Timber frame structures



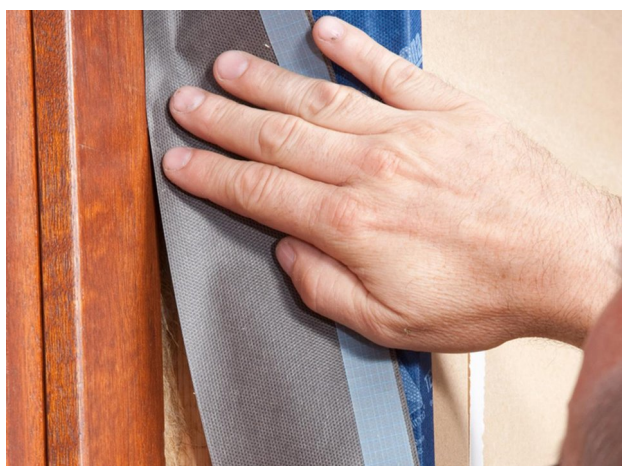
Schematic diagram

If the window is already installed, CONTEGA EXO is stuck to the frame.



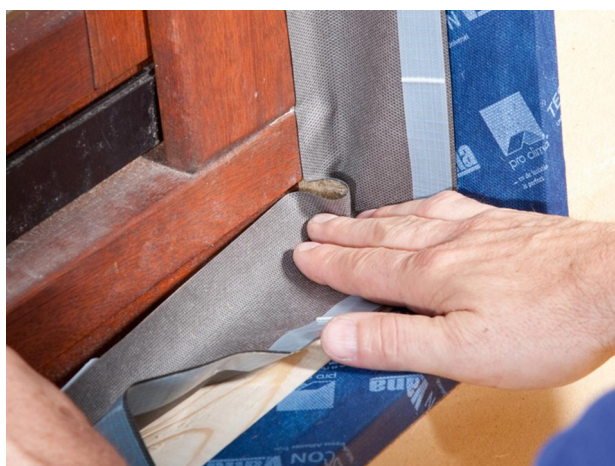
1. Remove the inner release film

Remove one of the release film strips on the membrane side (smooth side).



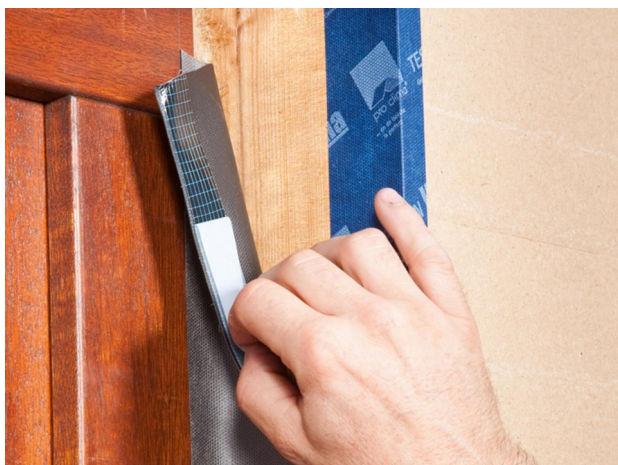
2. Stick to the frame

Place the full width of the adhesive strip of the tape onto the frame and stick the first reveal side.



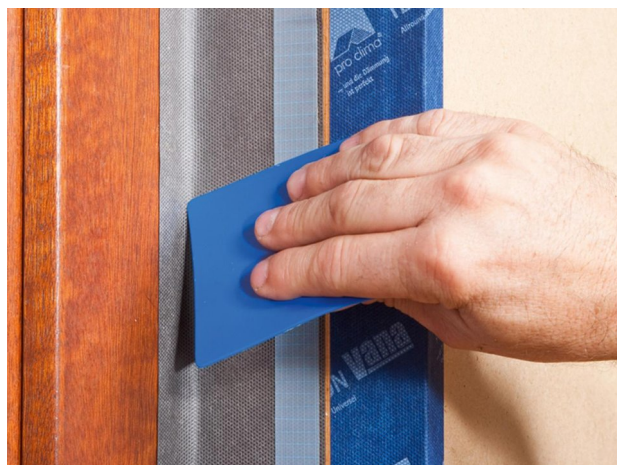
3. Preparation of corners

Fold the tape in the corner area. Ensure that there is uninterrupted windtight adhesion to the window. Then continue sticking around the rest of the frame. When finished, cut the tape, allowing approx. 5 cm (2") of an overlap.



4. Stick to the reveal

Remove the second strip of release film from the smooth membrane side and stick the tape all around the reveal.



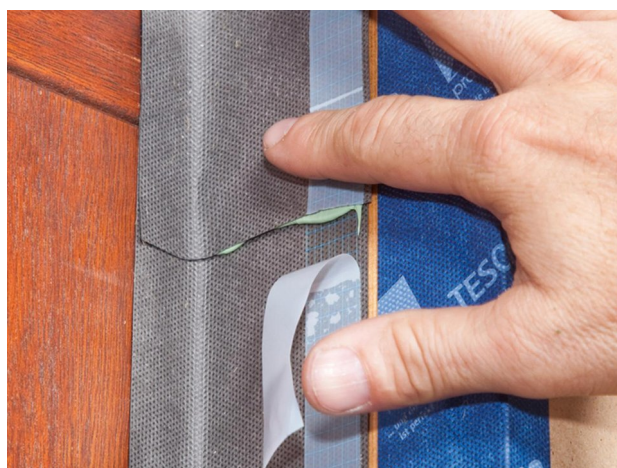
5. Rub the tape firmly to secure the adhesive bond

Rub firmly using the pro clima PRESSFIX application tool to secure the adhesive bond.



6. Stick the ends

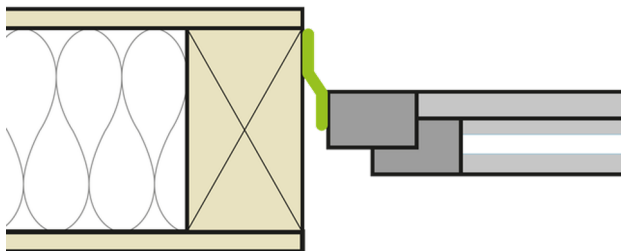
Remove the outer strip of release film from the smooth membrane side along a short length. Note: ORCON F will not stick to the release film. Apply an approx. 5 mm (3/16") thick line of ORCON F joint adhesive between the overlapping ends of the tape.



7. Stick the ends

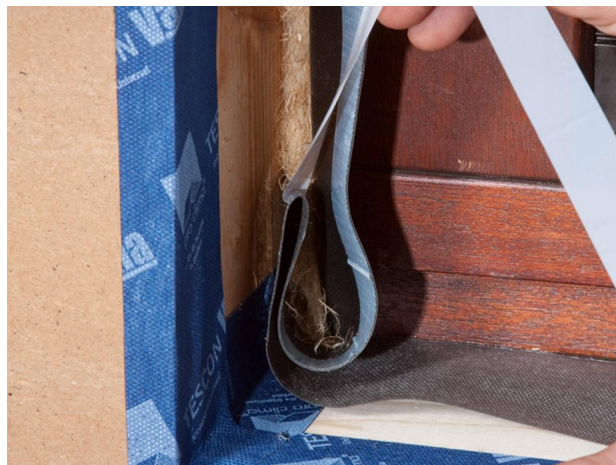
Place the tape onto the adhesive. You're finished!

Installation steps: 2. Timber frame structures



Schematic diagram

CONTEGA EXO has already been stuck to the side of the window frame – for example, by the window installation technician.



1. Preparation of corners

Remove the release film, fold the tape in the corner area and stick to one another. Stick the tape in place all around the reveal in a manner that is windtight and resistant to driving rain. Rub firmly using the pro clima PRESSFIX application tool to secure the adhesive bond. Ensure that there is sufficient resistance pressure.



2. Stick to the reveal

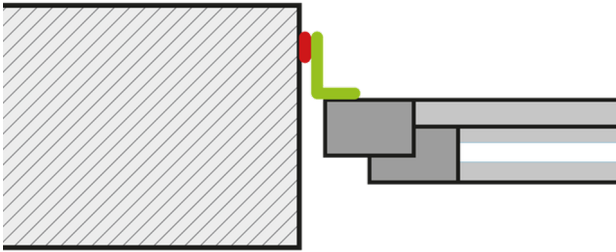
Remove the release film from the smooth membrane side and stick the tape all around the reveal in a manner that is windtight and resistant to driving rain. Rub firmly using the pro clima PRESSFIX application tool to secure the adhesive bond. Ensure that there is sufficient resistance pressure.



3. Stick the ends

Apply an approx. 5 mm (3/16") thick line of ORCON F joint adhesive between the overlapping ends of the tape. Place the tape onto the adhesive. Do not press the adhesive completely flat so as to allow for relative motion between components.

Installation steps: 3. Masonry/concrete structures



Schematic diagram

If the window is already installed, CONTEGA EXO is stuck to the frame.



1. Stick to the frame

Remove one of the release film strips on the smooth membrane side. Place the full width of the adhesive strip of the tape onto the frame and stick the first reveal side. Rub firmly using the pro clima PRESSFIX application tool to secure the adhesive bond.



2. Remove the inner release film

Remove the inner strip of release film on the first reveal side as far as the first corner.



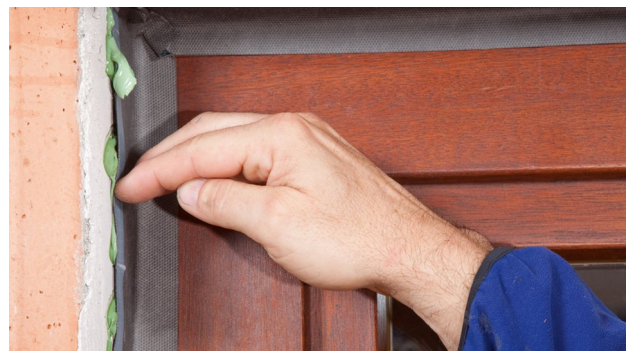
3. Preparation of corners

Fold the tape in the corner area. Ensure that there is uninterrupted windtight adhesion to the window. Then continue sticking around the rest of the frame. When finished, cut the tape, allowing approx. 5 cm (2") of an overlap.



4. Apply adhesive to surface

Apply a line of ORCON F joint adhesive to the reveal in a compact zig-zag pattern.



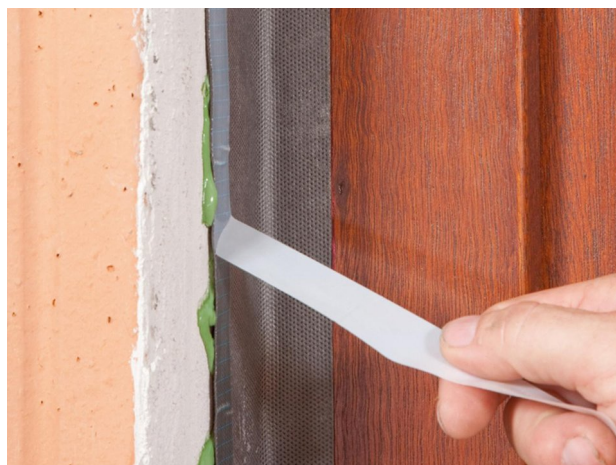
5. Place the tape onto the adhesive

Remove the inner release film all the way around. Note: ORCON F will not stick to the release film. Place the tape onto the adhesive. Do not press the adhesive completely flat so as to allow for relative motion between components.



6. Stick the ends

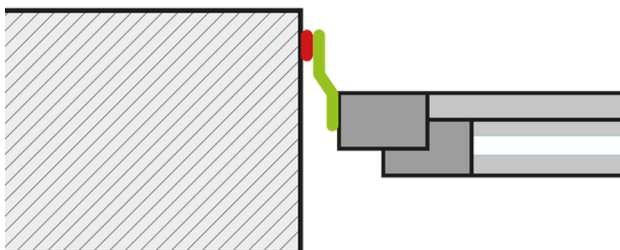
Apply an approx. 5 mm (3/16") thick line of ORCON F joint adhesive between the overlapping ends of the tape. Place the tape onto the adhesive. Do not press the adhesive completely flat so as to allow for relative motion between components.



7. Remove the outer release film

Remove the outer strip of release film (on the fleece side) all the way around. Note: plaster will not adhere to the release film. CONTEGA EXO can be plastered over.

Installation steps: 4. Masonry/concrete structures



Schematic diagram

CONTEGA EXO has already been stuck to the side of the window frame – for example, by the window installation technician.



1. Remove the inner release film

Remove the release film from the non-printed side of the membrane and place the tape onto the adhesive. Note: ORCON F will not stick to the release film. Do not press the adhesive completely flat so as to allow for relative motion between components.



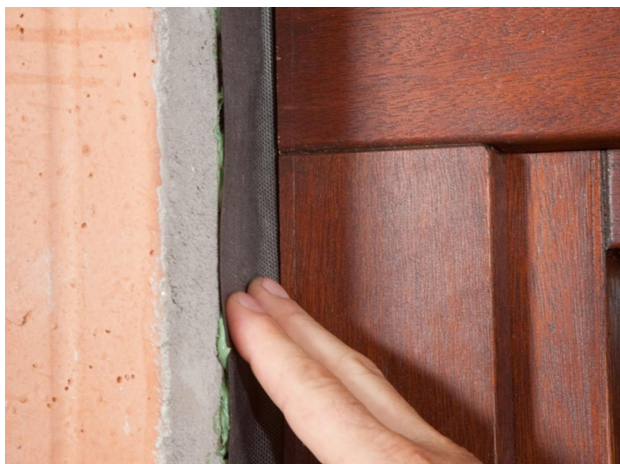
2. Apply adhesive to surface

Apply an approx. 5 mm (3/16") thick line (more in the case of very rough subsurfaces, if necessary) of ORCON F joint adhesive to the reveal in a compact zig-zag pattern.



3. Preparation of corners

Fold the tape in the corner area. Remove the release film in the corner area and stick the tapes to one another. Ensure that there is uninterrupted windtightness at the joint between the tapes.



4. Place the tape onto the adhesive

Place the tape onto the adhesive.



5. Stick the ends

Apply an approx. 5 mm (3/16") thick line of ORCON F joint adhesive between the overlapping ends of the tape. Place the tape onto the adhesive. Do not press the adhesive completely flat so as to allow for relative motion between components.



6. Stick the corners

Stick the folded corners together using ORCON F. The tape can then be plastered over more easily later on.



7. You're finished!

You now have a finished joint that is open to diffusion, resistant to driving rain and windtight! The tape can now be plastered over.

Substrates

Clean subsurfaces before sticking. Adhesion to frozen surfaces is not possible. There must be no water-repellent substances (e.g. grease or silicone) on surfaces where adhesives are to be applied. The width of the adhesive tape that is to be plastered over should generally not exceed 60 mm (2 3/8") or 50% of the soffit area. Detailed recommendations can be obtained from the relevant plaster producer. Subsurfaces must be sufficiently dry and stable.

Permanent adhesion is achieved on all pro clima exterior membranes and on other underlay and breather (WRB) membranes (e.g. those made of PP and PET). Adhesion can be carried out on planed and painted wood, hard plastics, hard wood-based panels (chipboard, OSB and plywood panels). For sealing joints on masonry or concrete or on rough substrates, use ORCON F.

The best results in terms of structural stability are achieved on high-quality subsurfaces. It is your responsibility to check the suitability of the subsurface; adhesion tests are recommended in certain cases. Pre-treatment with TESCON PRIMER is recommended in the case of subsurfaces with insufficient stability.

General conditions

The bonds should not be subjected to tensile strain. Rub the adhesive tapes firmly to secure the adhesive bonds. Ensure that there is sufficient resistance pressure. Seals that are windproof and resistant to driving rain can only be achieved if the sealing tape is installed free of folds and breaks. When plastering, please observe the recommendations of the plaster manufacturer for non-absorbent subsurfaces. A bonding course may be necessary.

The information provided here is based on practical experience and the current state of knowledge. We reserve the right to make changes to the recommended designs and processing or to make alterations due to technical developments and associated improvements in the quality of our products. We would be happy to inform you of the current technical state of the art at the time you use our products.

Further information about installation and design details is available in the pro clima planning documentation. If you have any questions, please contact [pro clima Technical Support](<https://proclima.com/service/technical-support>).

MOLL

bauökologische Produkte GmbH

Rheintalstraße 35 - 43

D-68723 Schwetzingen

Fon: +49 (0) 62 02 - 27 82.0

eMail: info@proclima.de